

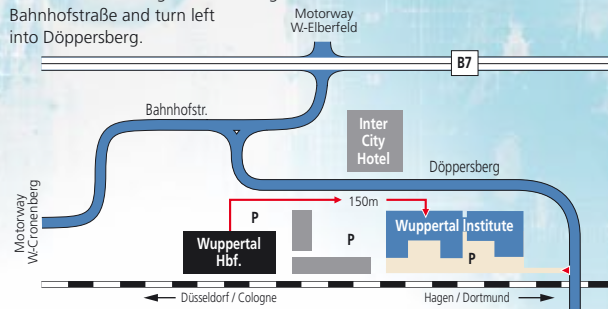
Wuppertal Institut · Döppersberg 19 · 42103 Wuppertal
By train

Wuppertal Hbf. After leaving the station, just turn right and you will find the Institute opposite the InterCity-Hotel.

Coming from Düsseldorf / Cologne, exit the A46 motorway at W.-Cronenberg. After passing the Kiesberg tunnel follow the signs to "Centrum-Elberfeld" and later, the lane marked "City". Pass under the railway bridge and turn right into Bahnhofstraße, using the right lane, and right into Döppersberg at the next traffic lights.

By car

Coming from Dortmund, exit the A46 motorway at W.-Elberfeld and follow the signs to "Elb.-Centrum" until you reach the junction of Bundesallee/Bahnhofstraße. Go straight ahead along Bahnhofstraße and turn left into Döppersberg.



Please note: Access to the Wuppertal Institute may change several times during the period of reconstruction of the station area at Döppersberg. Our homepage www.wupperinst.org will always inform you about the current state.

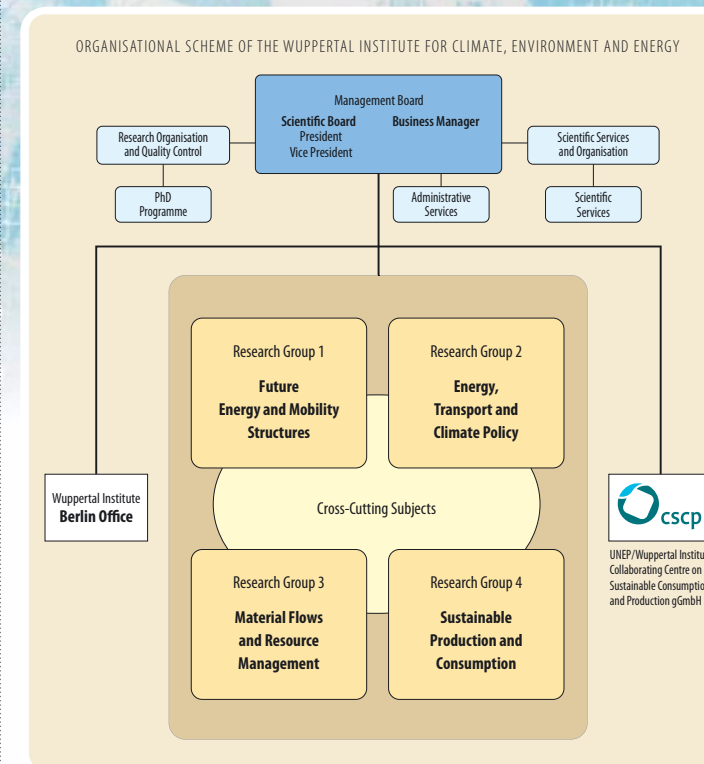
Berlin Office · Neue Promenade 6 · 10178 Berlin

The Wuppertal Institute's Berlin Office is located in Berlin-Mitte, a two minutes walk from S-Bahn station Hackescher Markt. Use any of the S-Bahn trains running between Berlin central station and Alexanderplatz or Ostbahnhof to get there. The entrance is directly opposite the station, Neue Promenade no. 6, 3rd floor.



A selection of books in English, written or edited by or with contributions of Wuppertal Institute scientists. Find more information at <http://www.wupperinst.org>

- Raimund Bleischwitz, Paul J. J. Welfens, ZhongXiang Zhang (eds.): **International Economics of Resource Efficiency – Eco-Innovation Policies for a Green Economy.** Physica-Verlag, Heidelberg, 2011
- Robert W. Howarth; Stefan Bringezu (Eds.) **Biofuels: Environmental Consequences and Interactions with Changing Land Use – Proceedings from the SCOPE International Biofuels Project Rapid Assessment on Biofuels.** Cornell University, Ithaca, 2009
- Wolfgang Sachs (Ed.) **The Development Dictionary. A Guide to Knowledge as Power (Second edition).** Zed Books, London, 2010
- Daniel Vallentin **Coal-to-Liquids (CtL): Driving Forces and Barriers – Synergies and Conflicts from an Energy and Climate Policy Perspective.** ibidem-Verlag, Stuttgart, 2009, (Ecological Energy Policy, vol. 11)
- Stefan Bringezu; Raimund Bleischwitz **Sustainable Resource Management – Global Trends, Visions and Policies.** Greenleaf Publishing, Sheffield, 2009
- Wolfgang Sachs; Tilman Santarius (Eds.) **Fair Future – Resource Conflicts, Security and Global Justice.** Zed Books, London, 2007
- Manfred Fischedick; Andrea Esken; H.-Jochen Luhmann; Dietmar Schüwer; Nikolaus Supersberger **CO₂-Capture and Geological Storage as a Climate Policy Option – Technologies, Concepts, Perspectives.** Wuppertal, 2007 (Wuppertal Spezial no. 35e)
- Raimund Bleischwitz; Peter Hennicke (Eds.) **Eco-Efficiency, Regulation and Sustainable Business – Towards a Governance Structure for Sustainable Development.** Edward Elgar Publishing Lim., Cheltenham, UK, 2004
- Peter Bartelmus (Ed.) **Unveiling Wealth. On Money, Quality of Life and Sustainability.** Kluwer Academic Publishers, Dordrecht, Boston, London, 2002
- Sebastian Oberthür; Hermann E. Ott **The Kyoto Protocol. International Climate Policy for the 21st Century.** Springer, Berlin, New York, London, Tokyo, et al., 1999
- Wolfgang Sachs; Reinhard Loske; Manfred Linz **Greening the North. A Post-Industrial Blueprint for Ecology and Equity.** Zed Books, London, 1998
- Ernst-Ulrich von Weizsäcker; Armory B. Lovins; L. Hunter Lovins **Factor Four: Doubling Wealth, Halving Resource Use.** Earthscan, London, 1997. Also available in German, Spanish, French, Czech, Italian and Japanese.


Wuppertal Institute

for Climate, Environment and Energy

Döppersberg 19
42103 Wuppertal

✉ P.O. Box 10 04 80
42004 Wuppertal

Phone: +49 (0) 202 2492-0
 Fax: +49 (0) 202 2492-108
 Mail: info@wupperinst.org
www.wupperinst.org

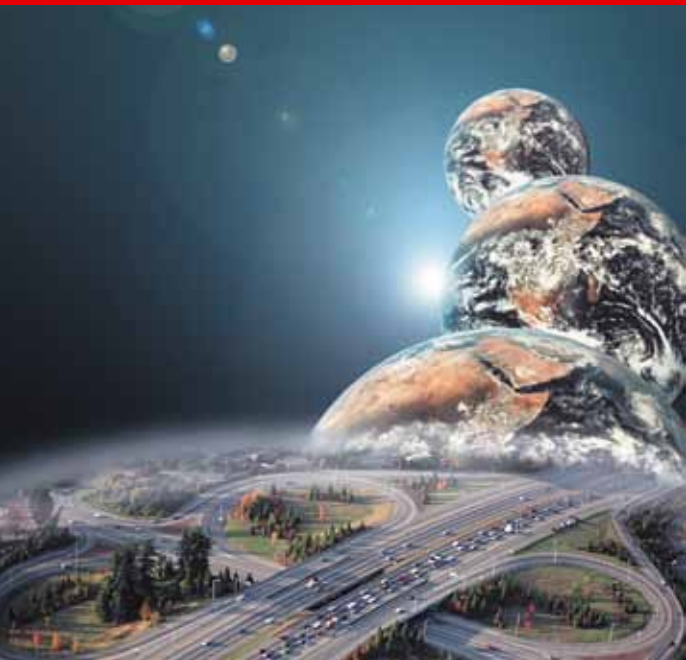
Berlin Office

of the Wuppertal Institute
at ProjektZentrum Berlin,
Stiftung Mercator

Neue Promenade 6
10178 Berlin

Phone: +49 (0) 30 2809-5494
 Fax: +49 (0) 30 2809-4895
 Mail: buero.berlin@wupperinst.org
www.wupperinst.org





We consume resources as if there were four earths

© WUPPERTAL INSTITUTE (WISLAB) 2003

Research Groups and Cross Cutting Projects

The core research fields of the Institute's research groups are:

Future Energy and Mobility Structures

Research Group 1 addresses questions of technology and infrastructure based on systemanalytic view. In the fields of energy and mobility the research group explores what technical and social innovations will facilitate the transition to sustainable structures, what implications this process has and what chances it offers. For that purpose, technical and economic potentials of climate protection technologies and strategies will be identified. Beside dynamic potential analyses it seeks to evaluate technology, to analyse infrastructures and transfer coherent paths of development for local authorities, states and branches.

Energy, Transport and Climate Policy

Research Group 2 focuses on sustainable policy strategies and instruments for effective and increasingly integrated energy, transport and climate policies at the local, regional, national and international level. The aim is to make greater use of the synergy effects of policy strategies that support the sustainable development of energy and transport systems as well as climate protection in general. Policy instruments in the field of energy end-use efficiency are a particular focus area.

Material Flows and Resource Management

Research Group 3 explores material flows from the extraction of raw materials to final disposal, calculating their global "eco-logical rucksacks" and the extent of land use involved. It develops concepts, strategies and instruments aimed at improving resource productivity and sustainable resource management on regional, sectoral and international level.

Sustainable Production and Consumption

Research Group 4 analyses material flows in value chains of industrialised societies and their interdependencies with the environment, economy and society. The focus is set on approaches decoupling the flourishing of human well-being from natural resource use through innovations in value chains in the production and consumption system. Therefore the Research Group develops strategies, concepts and instruments for initiating innovation and transition processes in value chains towards lifecycle-wide resource efficiency and sustainability.

Shaping a more sustainable society raises a number of challenges that are best solved through integrated research. Scientists from the Wuppertal Institute's research units therefore join forces in cross-cutting projects.

Knowledge Transfer

The Wuppertal Institute researches for politics, economy and society. It thus acts as an intermediary and transfers knowledge. The Wuppertal Institute's clients come from

- ▶ **government**, ranging from local authorities to ministries at both Land and national levels, at international level from the European Commission to the United Nations;
- ▶ **business and industry**, ranging from medium-sized companies to corporate groups and industrial associations;
- ▶ **civil society**, ranging from environmental associations to trade unions, churches and foundations.

The results and innovations that flow from an applied research and integrated approach are actively communicated to the target groups. The researchers of the Wuppertal Institute are in demand throughout the world. Lectures, conference presentations, publications, committee work (e.g. in Bundestag study commissions) and collaboration with scientists and research institutes all over the world serve to convey the institutes expertise.

In order to communicate research results to the public, the researchers are supported by a team of scientific services. Most of the numerous publications and research reports are available via the Wuppertal Institute's homepage at:

www.wupperinst.org

An International Advisory Board supports the Wuppertal Institute, ensuring its independence and the quality of its research.

Formal cooperations exist with the University of Wuppertal and with the Universities of Kassel, Osnabrück and Hagen. Internationally, formal cooperations were agreed with the Department of Environmental Sciences and Engineering at the Tsinghua University in Beijing, the Japanese Institute for Global Environmental Strategies (IGES) and the University of Teheran, Iran. The Wuppertal Institute has its own systematic programme to promote doctoral thesis and collaborates with a variety of university faculties both at home and abroad.

Organisation



Members of the management are (from left to right) Brigitte Mutert-Breidbach, Business Manager; Prof Dr Manfred Fischedick, Vice President (Authorised Representative) and Prof Dr Uwe Schneidewind, President (Chief Research Executive). (Photo: afi)

The Wuppertal Institute employs approximately 200 staff members. The members of the research staff come from a wide variety of scientific disciplines: natural and environmental sciences, geography, engineering, planning, law, economics, political and social science. Professor Dr Uwe Schneidewind is the president of the Wuppertal Institute.

In 1991, the Wuppertal Institute was founded by Professor Dr Ernst Ulrich von Weizsäcker as a non-profit limited company. Until the beginning of the year 2008, the Institute was headed by Professor Dr Peter Henicke.

The Land North Rhine-Westphalia as sole associate institutionally supports the Wuppertal Institute. Third-party funded projects, commissioned by clients from politics and economy, respond to most of the Institute's budgetary demands. In Berlin, the Wuppertal Institute is represented by its **Berlin Office**. The Wuppertal Institute and the United Nations Environment Programme (UNEP) jointly founded the UNEP/Wuppertal Institute Collaborating Centre on Sustainable Consumption and Production (CSCP). The **CSCP** is located in Wuppertal and has an international network. Its core research field and main target is to support the Marrakech Process directed by the UN as well as to encourage sustainable consumption and production particularly in the developing and emerging countries:

www.scp-centre.org